

AI Face & Temperature Recognition System Brand






AI

Face Recognition Temperature
Measurement Camera

Seoshin Ltd.

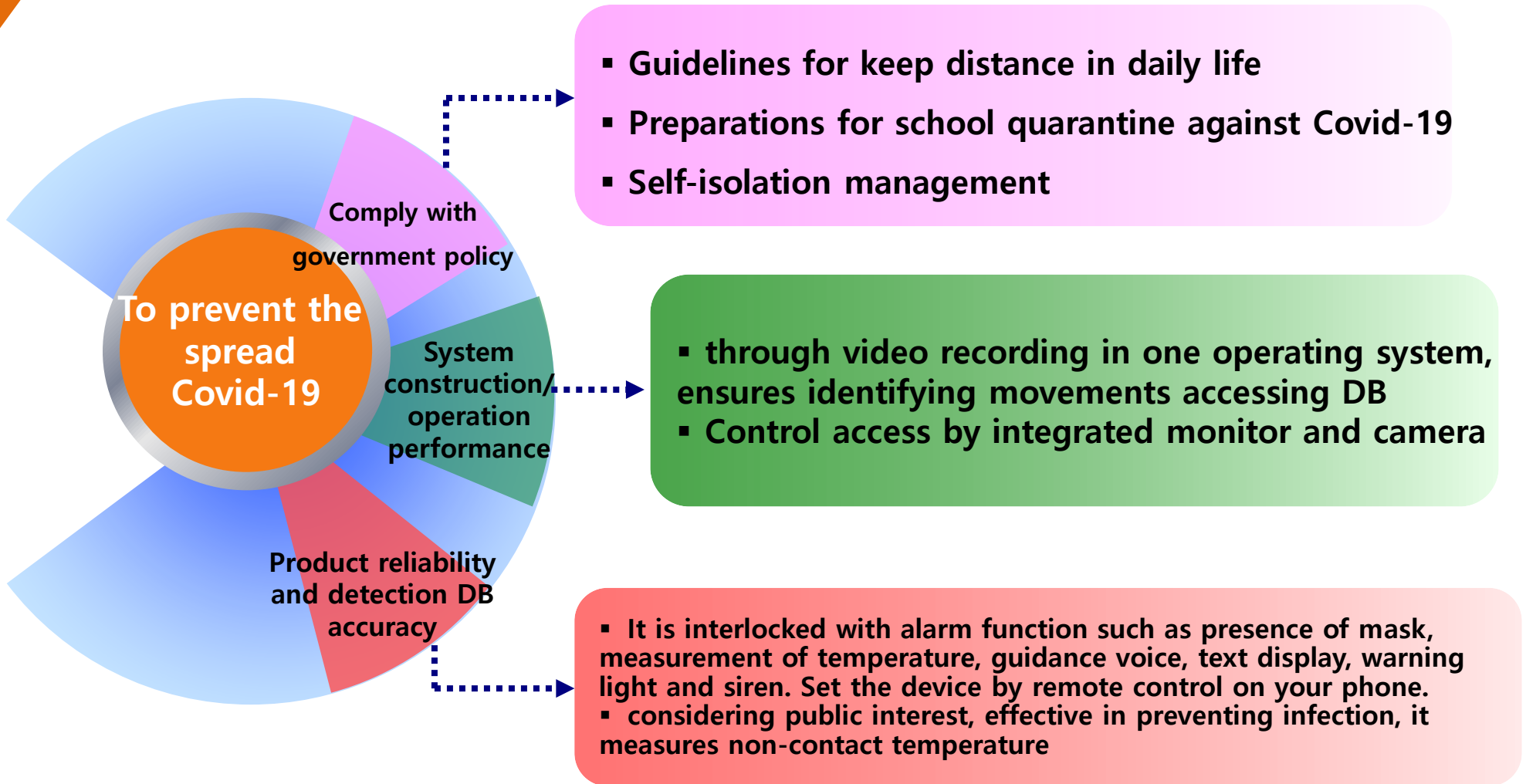


CONTENTS

- I** Introduction of System 
- II** System Configuration and Operating Platform 
- III** Installation and Requirements 
- IV** Product Details 
- V** System Proposal
Member Management System 

I . Necessity of System

I - 1. Introduction of system



I . Necessity of System

I - 2. Before & After the system operation

Safety

Potential infection risk due to direct measurement by the investigator



Safety

Pre-blocking infection elements in a non-contact way
Recognition from 0.5 ~ 2.5M

Speed

accumulate fatigue through waiting time and repeated measurement

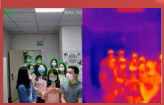


Speed

Faster line pass through maintaining a certain distance
Real-time monitoring → Recognition → comparison → approval (0.2s)

Accuracy

impossible to measure individual temperature due to the overlapping of multiple personnel.



Accuracy

DB creation and management for individual pass records
Deep learning algorithm ensures 99.5% accuracy

Cost

Dual thermal camera.
inappropriate device cost



Cost

System construction and management at low cost
Can operate by single camera

Compatible

securing compatibility with operating access control systems



Compatible

Interface interoperability with various systems
Access control system, customer management, enterprise resource management

II. System Configuration and Operating Platform

II - 1. Product Summary

Temperature error range : ± 32.5 °F

25,000
Data registration

7-inch IPS HD LCD
screen

Recognition speed
below 200ms
(300persons per 1min)

Identification of wearing mask



99.5% Accuracy

Facial and temperature
measurement
Up to 2.5m

Real-time ▶ Capture
▶ Compare ▶
Approve

Registration / non-
registration identification

II. System Configuration and Operating Platform

II - 2. main function

AI Facial recognition & temperature measuring device

1. Face recognition and temperature measurement possible at a distance up to 2.5 meters and accurate temperature measurement is possible. (error range: ± 32.5 °F)
2. Traditional temperature measuring devices are inefficient and inconvenient because they must be carried by a person and only measure the temperature at a short distance.
3. AI-High Accuracy Face Recognition Body Temperature Camera avoids physical contact and saves manpower.
4. People who are not wearing masks and outsiders can also be detected.
5. It is convenient to check the number of people entering and exit by automatically recording the face of a person and to solve secondary problems..
6. Automatically record abnormal temperature information and related personnel.
7. By adopting deep learning algorithm, it supports 25,000 registered faces and speed recognition of 200Ms (appx. 0.2 sec), can pass quickly, and can be interlocked with access control.
8. It supports internet data transmission, so you can upload and store device comparison results and photos in real time and install them easily.
9. The system cost lower than the existing thermal imaging camera



II. System Configuration and Operating Platform

II-3. Platform Operating Instructions

Remote configuration

Configuration X

Basic Param Network Config Identification Param Remote Config Version Info Function Param

Restart Terminal Device Restart

Upgrade Firmware Please choose ▾

Volume Setting(0-84) 75

Screen Brightness Setting(45-100) 60

Light Supplementary Settings

Snap report address :80

Restore Factory Settings Restart

Restart, upgrade, volume, brightness, snapshot upload

Version Information

Configuration X

Basic Param Network Config Identification Param Remote Config Version Info Function Param

Model FRD

firmware Version FK02GYW_P4_V20.1.13.1

Serial Number 7101185847926

apk version

Estimated version information view

Function parameter

Configuration X

Basic Param Network Config Identification Param Remote Config Version Info Function Param

Temperature Detection

Alarm Temperature 37.299999

Stranger Can Open

Check Mask

Cancel Set Up

Temperature measurement, alarm temperature, stranger, detection mask

* Capture the address, fill in the client's local computer IP address, port 80, and automatically upload all detected face pictures to the server.

II. System Configuration and Operating Platform

II-4. Platform Operating Instructions

Device function configuration

Configuration [X]

Basic Param Network Config Identification Param Remote Config Version Info Function Param

Device Name 7101185847926

Device Password

Equipment Time(Synchronize with the server)

Cancel Reset Set Up

Device name, password, time

Configuration [X]

Basic Param Network Config Identification Param Remote Config Version Info Function Param

IP Address 172.18.184.209

Subnet Mask 255.255.248.0

Gateway 172.18.189.189

DNS1 192.168.1.1

DNS2 8.8.8.8

Cancel Reset Set Up

Network address configuration

Configuration [X]

Basic Param Network Config Identification Param Remote Config Version Info Function Param

Capture the number of faces(1-4) 1

Time interval for identical person recognition(1-5s) 1

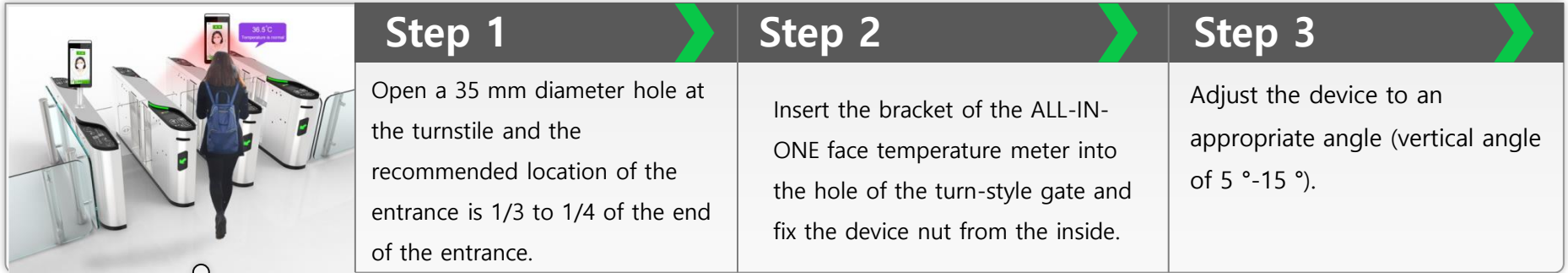
Cancel Reset Set Up

Capture interval setting

III. Installation and application places

III - 1. installation

- Install Type : entrance Gate
- Apply Place : Office/ Large building etc



Rapid installation and operation in various places

- Install Type : Pole stand type
- Apply Place : Airport / Port / Department Store, etc.



- Install Type : Wall type
- Apply Place: School / Office



- Install Type : Table Type
- Apply Place : Hospital / welfare facilities, etc.



III. Installation and application places

Q) What should I pay attention to when installing?

A) Please be aware of the following when installing.

- 1) The human face must be placed within the frame on the recognition screen, and no need to fill the area inside the frame.
- 2) The angle can be adjusted according to the actual height.
- 3) Turn on the device, warm it up for a while(20min), and test it.
- 4) The machine is held as tight as possible during the test.
- 5) When held by hand, shaking can be caused, affecting the accuracy of temperature measurement.
- 6) If you have bangs, please raise them.
- 7) For temperature measurement, the area with the highest temperature is applied, and the bangs may be higher than the forehead, so the bangs must be raised.
- 8) During testing and actual use, test objects and temperature meters should be kept away from heat sources (air conditioning outlets, microwave ovens, heaters, etc.).
- 9) If there is a heat source nearby, a distance of at least 3 m should be installed.

Q) What platform is required for installation?

A) Please be aware of the following when operating.

- 1) 64-bit program is required and cannot be used on 32-bit systems.
- 2) Browser: We recommend the latest version of Chrome or Firefox.
- 4) If the anti-virus software alarms an abnormal warning, you need to allow all settings of the product or turn off the anti-virus software in advance..
- 5) For photos uploaded abnormally, check the resolution and clarity, resolution cannot exceed 4K, and for photos that fail to upload recommended to reduce the size of the photos and upload again.

Ⅲ. Installation and application places

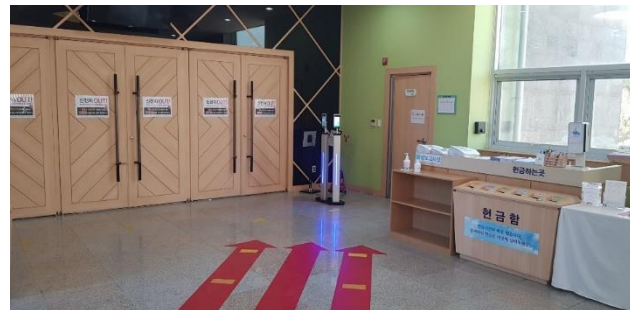
Ⅲ - 3. Installation and operation examples



[University]



[Building]



[Church]

IV. Specification

IV - 1. Product Specification

System	Main	MX3520
	Operating System	Embedded LINUX
	RAM	DDR3 512MB
	ROM	EMMC 8GB
Screen	Dimensions	7 inch IPS HD LCD Screen
	Resolution	736*1280
Camera	Type	2MP night vision living detection camera
	Sensor	1/5" GC2145
	Resolution	NIR 800*600 15fps
	Lens	2.4mm
Camera	Type	Daily camera
	Sensor	1/2.8" SONY Starvis Back-illuminated CMOS sensor IMX307
	Resolution	Color 1920*1080 30fps
	Lens	4.5mm
Body temperature detection	Measuring site	Forehead
	Temperature range	96.8 – 107.6 °F
	Temperature measuring distance	0.5-2.5m, 0.75m is the best
	Temperature measurement accuracy	± 32.5 °F
	Temperature measurement response	Face library people: 1.5-2s, Strangers: 2.5-3s

IV. Specification

IV - 2. Product Specification

Face recognition	Detection Type	Support living detection, Mask detection
	Face recognition distance	0.5 - 2.5m
	Face database capacity	Max support 30,000 faces
	Face Posture	(Daytime) vertical viewing 58°-60°, horizontal viewing 35°; (Living body) vertical viewing 48°-50°, horizontal viewing 36°
	Occlusion	Ordinary glasses and short sea retention have no effect on recognition.
	Expression	Slight facial expression doesn't affect face recognition function
	Response Speed	About 0.2 second
	Face exposure	Support
	Local Storage	Support storage of 25,000 records
	Recognition area	Full image recognition
Upload Method	TCP, HTTP, MQTT	
Network Functions	Network protocol	IPv4, TCP/IP, HTTP
	Security Mode	Authorized username and password
	Event linkage	Voice broadcast , Abnormal event upload to the platform
	System Upgrade	Support remote upgrade
Accessory	Supplementary light	IR light, LED white light
	Audio out	Built in Speaker support voice broadcast after successful recognition

IV. Specification

IV - 3. Product Specification

Interface	Network Interface	RJ45 10M/100M Network Adaptation
	Alarm Output	1 Channel relay output(NC or NO)
	RS232	Support
	RS485	Support
	Reset key	Support
General	Housing	Metal body and braket, Plastic screen, IP66
	Operating Temperature	-4 °F ~ 140 °F
	Working humidity	10% - 90% (Non-condensing)
	Storage humidity	5% - 95% (Non-condensing)
	Power Supply	DC 12V / ≤12W
	Dimensions (mm)	219(W)*111(H)*21.5(T)
	Bracket size (mm)	Φ25*189
Installation Method	Desktop Installation/Floor Support Installation	

IV. Specification

IV - 2. System superiority

Classification	Seoshin LTD ENP-FT207	A Brand	C Brand	M Brand
Product appearance				
Temperature range error	±32.5°C	± 32.9 °F	±32.5 °F	35°C~38°C, ±0.3°C, 38°C ~50°C, ±0.6°C; 그 외 : ±2°C
Recognition distance	0.5 ~ 2.5M	1.0M	0.4~0.7M	자료 없음
Recognition speed	200ms	500ms	300ms	자료 없음
Resolution	1920*1080 30fps(O/C) + 800*600 15fps(O/C)	1920*1080 30fps	1920*1080 30fps	1920*1080 30fps(O/C) + 352x288(T/C)
Alarm settings	Excess temperature/Outsider/Mask ☞ Alarm/Voice/Message	Excess temperature /Outsider/Mask ☞ Alarm/Voice/Message	Excess temperature /Outsider/Mask ☞ Alarm/Voice/Message	Excess temperature ☞ Alarm/Message
Waterproof dustproof	IP66	No Data	No Data	IP67
Video features	Face recognition Heat sensing Access control	Face recognition Heat sensing Access control	Face recognition Heat sensing Access control	Heat sensing CCTV
accessory	LED Light&Built-in speaker	LED Light&Built-in speaker	LED Light&Built-in speaker	Provide port for voice support
Working with other systems	Access Control, CCTV, CRM, ERP, etc.	Access Control, CCTV, CRM, ERP, etc.	Access Control, CCTV, CRM, ERP, etc.	CCTV, etc.
Certification	KC, CE, RoHS	No Data	No Data	No Data

IV. Specification

IV - 3. Certification Status

1E76-CE2D-E5AC-C148

방송통신기자재등의 적합등록 필증

Registration of Broadcasting and Communication Equipments

상호 또는 성명 <i>Trade Name or Registrant</i>	이후커뮤니케이션(주)
기자재명칭(제품명칭) <i>Equipment Name</i>	안면인식 IP CCTV패널
기본모델명 <i>Basic Model Number</i>	ENP-HXYZ
과생모델명 <i>Series Model Number</i>	ENP-FT205, ENP-F209, ENP-F205, ENP-F207, ENP-F204, ENP-FT207, ENP-FT204, ENP-FT209
등록번호 <i>Registration No.</i>	R-R-ehi-ENP-HXYZ
제조사/제조(조립)국가 <i>Manufacturer/Country of Origin</i>	이후커뮤니케이션(주) / 한국
등록연월일 <i>Date of Registration</i>	2020-04-21
기타 <i>Others</i>	

위 기자재는 「전파법」 제58조의2 제3항에 따라 등록되었음을 증명합니다.
It is verified that foregoing equipment has been registered under the Clause 3, Article 58-2 of Radio Waves Act.

2020년(Year) 04월(Month) 21일(Day)



국립전파연구원장

Director General of National Radio Research Agency

※ 적합등록 방송통신기자재는 반드시 "적합성평가표시" 를 부착하여 유통하여야 합니다.
위반시 과태료 처분 및 등록이 취소될 수 있습니다.

EU Declaration of Conformity

ATTESTATION


According to

with European Directives

For the following

Product	: Face recognition and thermal temperature measuring IP camera panel
Model Name	: ENP-HXYZ
Variant Model Name	: ENP-FT204, ENP-FT205, ENP-FT207, ENP-FT209, ENP-F204, ENP-F205, ENP-F207, ENP-F209
Applicant	: Ehoo Communication Ltd.
Address	: 404, HighTech-Gwan, 56, Munemi-ro 448beon-gil, Bupyeong-gu, Incheon, Republic of Korea
Manufactured at	: Ehoo Communication Ltd.
Address	: 404, HighTech-Gwan, 56, Munemi-ro 448beon-gil, Bupyeong-gu, Incheon, Republic of Korea

The submitted sample of the above equipment has been tested for CE marking according to following European Directive and standards:
- Electromagnetic Compatibility Directive 2014/30/EU




The referred test report(s) show that the product complies with standard(s) recognized as giving presumption of compliance with the essential requirements in the specified European Directive. This verification does not imply assessment of the production of the product. The CE marking may be affixed if all relevant and effective European Directives with CE are applicable.

The standards relevant for the evaluation of EMC requirements are as follows:

Test Standards	: EN 55032:2015, Class A EN 55024:2010 /A1:2015 EN 61000-3-2:2014 EN 61000-3-3:2013
----------------	--

Ehoo Communication Ltd.
404, HighTech-Gwan, 56, Munemi-ro
448beon-gil, Bupyeong-gu, Incheon,
Republic of Korea

Date of issue: 2020-04-20



(Name and signature of authorized person)

V. System proposal _Member Management System

V - 1. VIP Member Management System

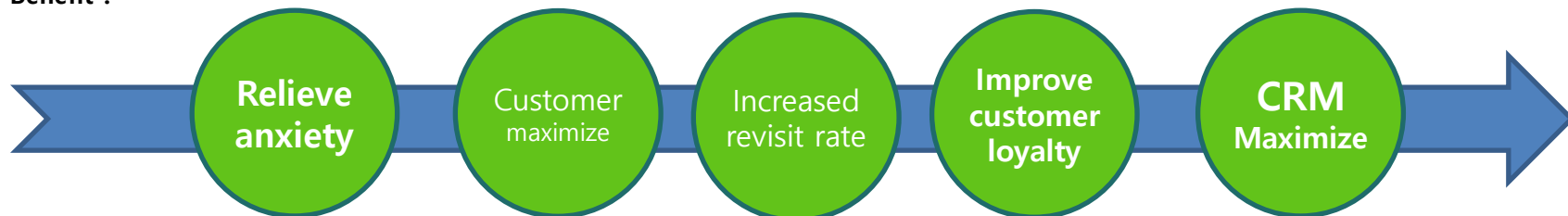
1. Introduction

- With the introduction of a facial recognition temperature measurement camera (non-contact), it is possible to quickly manage the customer's access and effectively resolve customer anxiety.
- Rising customer (engagement): Recognizing products frequently ordered by VIP customers and showing them on the screen at the same time, forming new customer contacts and forming customer relationships and expecting synergistic effects
- VIP membership management: Quickly respond to customer service by showing the customer's order in advance when a member registers access
- Maximize CRM by applying deep learning-based customer customized service (customized new product proposal advertisement, etc.) through accumulated DB

2. Introduction system operation scenario



3. Benefit :





Thank you.

Inquiry

E-mail: zemitaworld@gmail.com

Mobile: +1 (847) 849-1122

www.zemitaworld.com

